

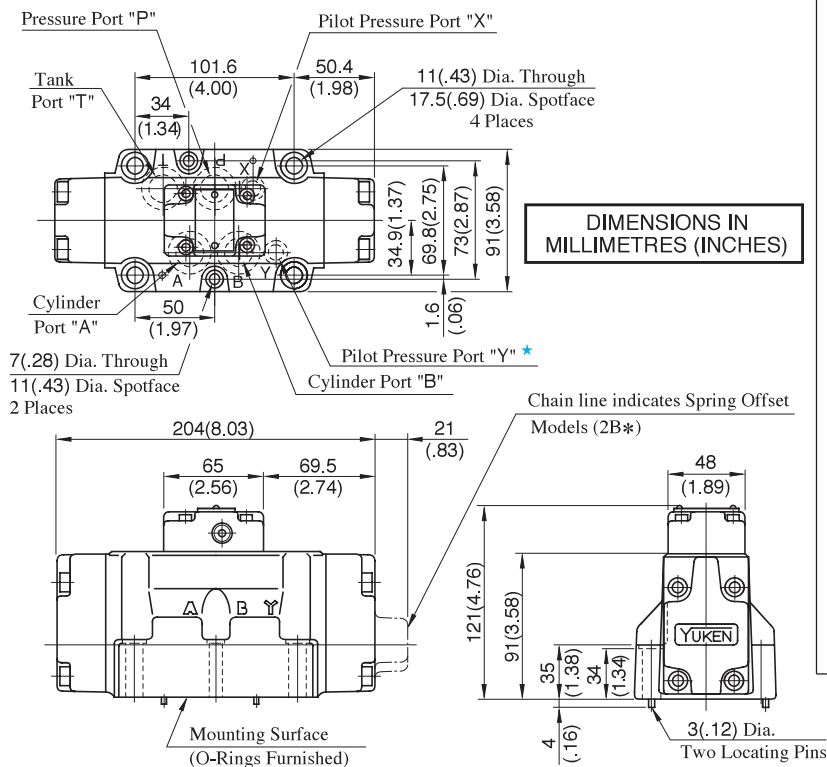
## Valves Using Neutral Position and Side Position (Special Two Position Valve)

In addition to the standard two positions valves (2B\*), the following two types of two positions valves are available: valves with neutral position and pilot Y pressure position (2B\* A), valves with neutral position and pilot X pressure position (2B\* B).

Model Numbers	Graphic Symbols
04 DHG-06-2B* <u>A</u> 10	
DHG-*-2B2A	
DHG-*-2B3A	
DHG-*-2B4A	
DHG-*-2B40A	
DHG-*-2B5A	
DHG-*-2B6A	
DHG-*-2B60A	
DHG-*-2B7A	
DHG-*-2B9A	
DHG-*-2B10A	
DHG-*-2B11A	
DHG-*-2B12A	

Model Numbers	Graphic Symbols
04 DHG-06-2B* <u>B</u> 10	
DHG-*-2B2B	
DHG-*-2B3B	
DHG-*-2B4B	
DHG-*-2B40B	
DHG-*-2B5B	
DHG-*-2B6B	
DHG-*-2B60B	
DHG-*-2B7B	
DHG-*-2B9B	
DHG-*-2B10B	
DHG-*-2B11B	
DHG-*-2B12B	

### DHG-04-\*\*\*-50/5090

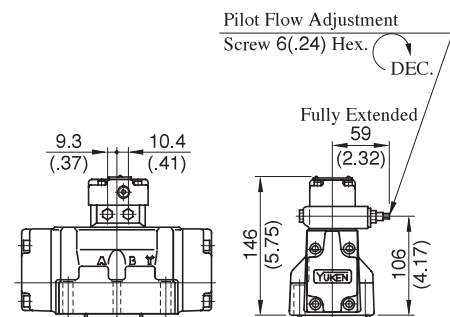


Note: For the valve mounting surface dimensions, see the dimensional drawing of the sharable sub-plate on [page 401](#).

### Mounting Surface: ISO 4401-AD-07-4-A

#### Options

#### ● Models with Pilot Choke Valve DHG-04-\*\*\*-C2



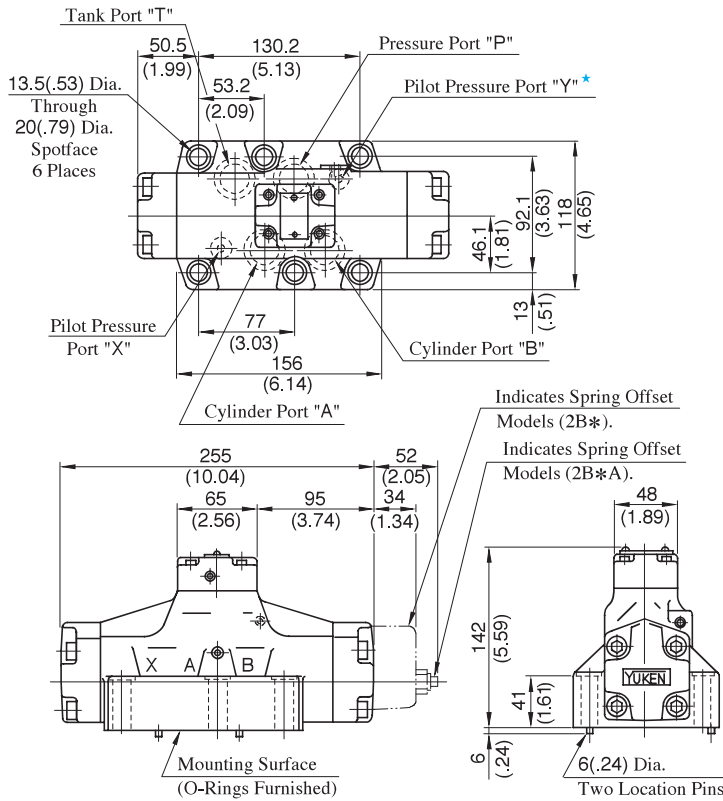
#### ● Models with Stroke Adj. (R\*)

Outside dimensions are the same as those of the main valve of Solenoid Controlled Pilot Operated Directional Valves (DSHG-04). See [page 405](#).

★ For Spring Offset Models (2B\*, 2B\*A), it functions as drain port. When that model is used, directly connect it to the reservoir.

DHG-06-\*\*\*-50/5090

Mounting surface: ISO 4401-AE-08-4-A



Note: For the valve mounting surface dimensions, see the dimensional drawing of the sharable sub-plate in [page 402](#).

## Options

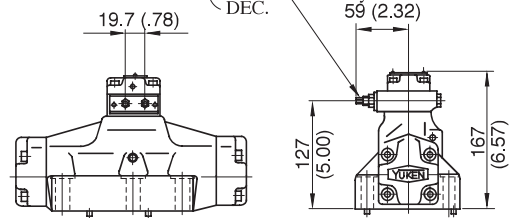
### Models with Pilot Choke Valve DHG-06-\*\*\*-C2

Pilot Flow Adjustment Screw

6 (.24) Hex.

DEC.

Fully Extended 59 (2.32)



- **Pressure Centred Models (3H\*)**
- **Models with Stroke Adjustment (R\*)**
- **Models with Pilot Piston (P\*)**

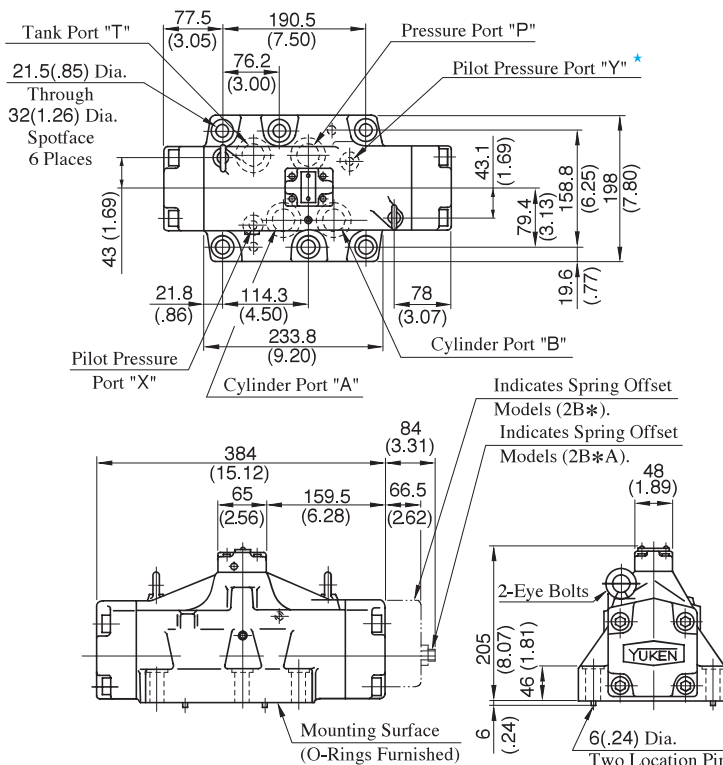
The outside dimensions of the above options are the same as those of the main valve of Solenoid Controlled Pilot Operated Directional Valve (DSHG-06). See [page 405](#).

★ In case of Spring Offset Model (2B\*, 2B\*<sup>A</sup><sub>B</sub>), it functions as a drain port. When that model is used, directly connect it to the reservoir.

DIMENSIONS IN  
MILLIMETRES (INCHES)

DHG-10-\*\*\*-40/4090

Mounting surface: ISO 4401-AF-10-4-A



Note: For the valve mounting surface dimensions, see the dimensional drawing of the sharable sub-plate in [page 403](#).

## Options

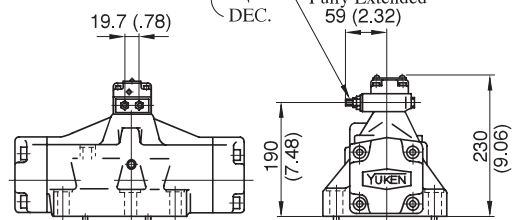
### Models with Pilot Choke Valve DHG-10-\*\*\*-C2

Pilot Flow Adjustment Screw

6 (.24) Hex.

DEC.

Fully Extended 59 (2.32)



- **Pressure Centred Models (3H\*)**
- **Models with Stroke Adjustment (R\*)**
- **Models with Pilot Piston (P\*)**

The outside dimensions of the above options are the same as those of the main valve of Solenoid Controlled Pilot Operated Directional Valves (DSHG-10). See [page 405](#).

★ In case of Spring Offset Model (2B\*, 2B\*<sup>A</sup><sub>B</sub>), in functions as a drain port. When that model is used, directly connect it to the reservoir.

E



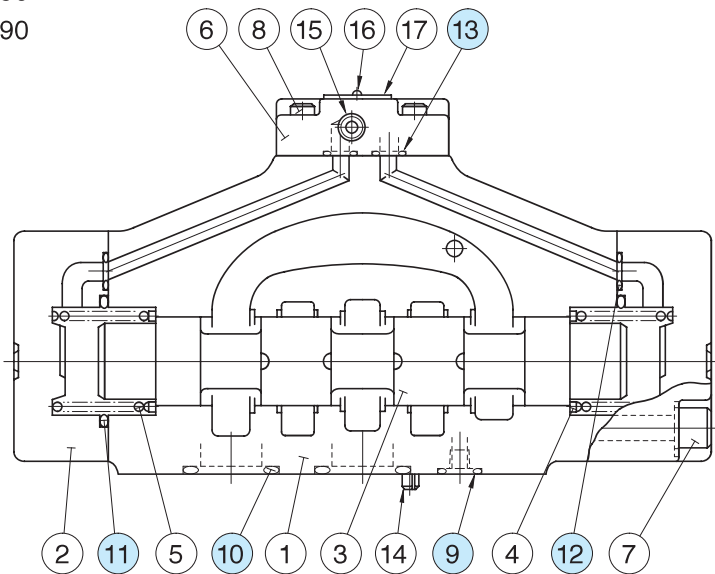
Pilot Operated Directional Valves

■ List of Seals

DHG-04-\*\*\*-50/5090

DHG-06-\*\*\*-50/5090

DHG-10-\*\*\*-40/4090



Item	Name of Parts	Part Numbers			Qty
		DHG-04	DHG-06	DHG-10	
9	O-Ring	SO-NB-P9	SO-NB-P14	SO-NB-P20	2
10	O-Ring	SO-NB-P22	SO-NB-P30	SO-NB-P42	4
11	O-Ring	SO-NB-P34	SO-NB-P40	SO-NB-G65	2
12	O-Ring	SO-NB-P9	SO-NB-P10	SO-NB-P14	2
13	O-Ring	SO-NB-P9	SO-NB-P9	SO-NB-P9	4

Note: When ordering the o-rings, please specify the seal kit number from the table below.

Valve Model Numbers	Seal Kit Numbers
DHG-04-***-50/5090	KS-DHG-04-50
DHG-06-***-50/5090	KS-DHG-06-50
DHG-10-***-40/4090	KS-DHG-10-40